



Choice Based Credit System (CBCS)

Driven by Student Choice

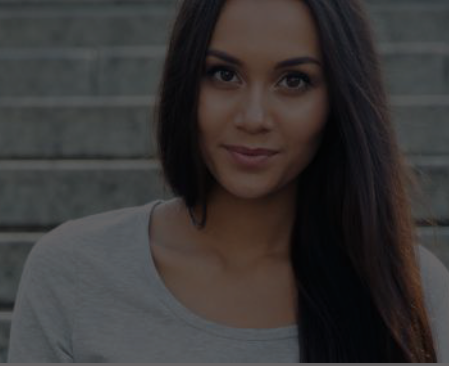
Higher education institutions focus on preparing students to achieve their career goals and aspirations. You can, however, advance your position to play a larger role in building the nation's human capital. By upgrading from the traditional rigid educational system to a flexible choice-based one, the learning experience can be enhanced to international levels, to enable students to find a place in the future global talent pool.

Camu Choice Based Credit System is an international pedagogy system that offers students full flexibility in their choice of courses, faculty, personalised study plans, and credits accumulation. With a stimulating learner-centric approach, efficient academic planning and a fully automated course registration, Camu Choice Based Credit System gives you a head start to becoming the institute of the future.

Register on a mobile app in 2 minutes.

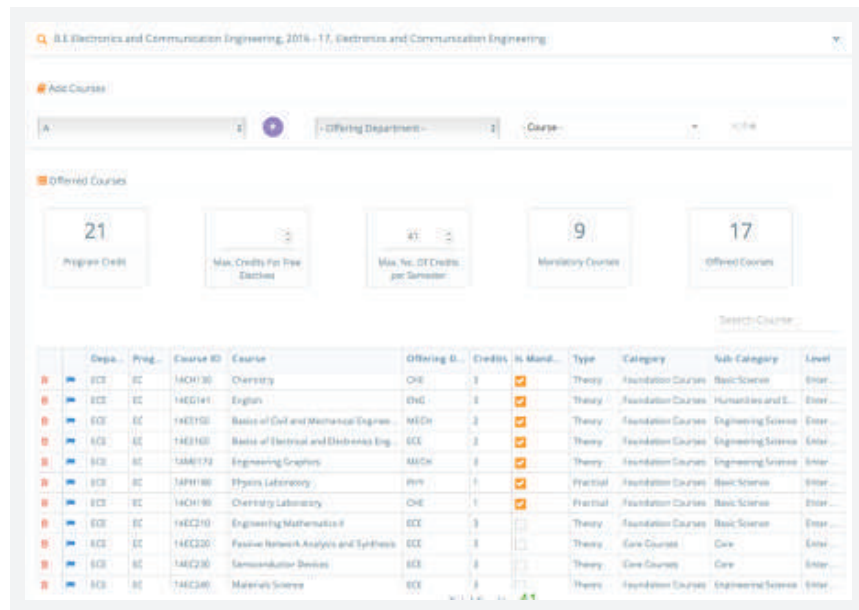
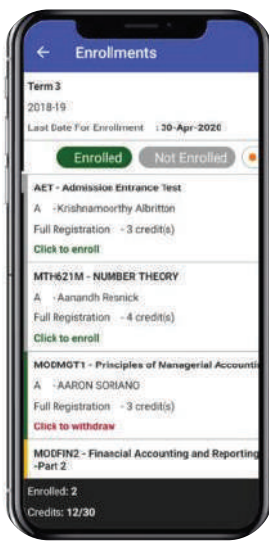
Camu Choice Based Credit System offers a fully automated course registration that enables curriculum design, study plans, lecture scheduling, advising, course registrations and course withdrawals, and payments and refunds – via desktop or the Camu mobile app.

Choice Based Credit System (CBCS)



Course Offering: The course offering can be set to include a choice of core categories and sub categories with the mandated pre-requisites, in a single display. Courses can be created afresh for every program or

duplicated from the previous year, based on the demand. The system automatically denies registrations to students who fail to meet the specified criteria.



Program Credits: Minimum and maximum credit requirements for each course can be defined; the system ensures the student's

choices do not exceed the prescribed limit. Neither does it allow courses with conflicting timings to be selected.

CATEGORY-WISE DETAILS		PROGRAM CREDIT - 59.5/129		Previous	Enrolment
Elective Group	Min Credits : 9	Max Credits : 40	Credits Earned : 15		
Sub-Category	Min Credits	Max Credits	Credits Earned		
Level 1	9	22	15		
Research/Practicum	Min Credits : 4	Max Credits : 9	Credits Earned : 1.5		
Sub-Category	Min Credits	Max Credits	Credits Earned		
Level 2	1	4.5	1.5		
Core Group	Min Credits : 24	Max Credits : 48	Credits Earned : 40		
Sub-Category	Min Credits	Max Credits	Credits Earned		
Advanced	18	27	27		
Basic	6	21	13		
Free Elective	Min Credits : 4	Max Credits : 26	Credits Earned : 3		
Sub-Category	Min Credits	Max Credits	Credits Earned		
Level 3	0	14	3		

The Plantilla Builder for Lecture Scheduling: Drive the conceptual change. It is not a class timetable anymore. It's the Department's timetable. Drive efficiencies in teaching faculty demand, lecture halls and facilities. The CBCS approach is very transparent about

the choice of students. Optional Courses which are not of value are identified to be made redundant. The most sought-after courses tend to have multiple slots providing the students with a choice of teacher and a lecture schedule.



Semester Configuration: Every course is linked to a registration start and end date. Camu enables institutions to offer students a preview of the courses' timetable prior to the enrollment period, to help them evaluate their choices and make the decisions that align with their career goals. Registrations can then be opened for students who can

instantly sign up for their seat, especially if they are limited.

Enrollment Approval: As the system automatically computes credits and guards from conflicting courses being selected, approvals become easier. These can be confirmed either individually or as a batch, in a few clicks.

Enrollment Checklist: The CBCS system allows candidates from various academic backgrounds to attend the same course, leading to administrative complexities. Even knowing accurate enrollment counts, creating error-free timetables, and managing capacity and credit limits become a challenge. Camu simplifies this with a Course Enrollment Checklist feature. It identifies potential enrollment issues, such as Courses Without Capacity Mapping, Students Without Course Plans, Timetable Conflicts, and so on. Each item is flagged red or green, providing a clear indication of any issues.

Scheduler Report: Each morning the Heads of Departments will receive a report that documents the previous day's actions taken by faculty members in their respective classes, from student attendance to faculty schedules to teaching plans. It showcases information about each and every faculty program, term, module, and status, with remarks. Red, green, and orange flags are used to indicate the completeness of the actions taken by the faculty.

DRIVEN BY STUDENT CHOICE

Camu offers a Fully Flexible Choice Based Credit System that empowers students to curate their professional growth at the institution level.



Subjects can be chosen from the prescribed courses comprising core, elective/minor or skill based courses.

The flexibility to choose subjects even from other disciplines offers an **education that is goal centric yet broad-based.**



Customised subject choices aligned with professional goals and ambitions enable students to **acquire relevant job-oriented skills.**



A credit system for each course enables students to **pace learning according to their capacity**, which is beneficial for underperformers as well as overachievers.



Credits puts the education at par with international standards, which facilitate **easy migration between institutions across the country or across the world.**



Compared to the marks system, a **uniform Grading system provides an accurate estimate of performance**, especially for potential employers.



A SINGLE SYSTEM WITH MULTIPLE BENEFITS

Camu Choice Based Credit System can be easily configured to your institution's governing body and syllabus.



Pre-defined course pre-requisites, credit requirements, core and elective subject combinations, and fee payments **facilitate instant course registrations via a mobile app.**



Dashboards on under-registered courses and no-shows allow instant course correction and notifications to students in real-time. This offers **substantial resource savings** by eliminating unnecessary investments and overheads.



Lecture halls are intelligently allocated basis course time slots and student capacity, which **optimises available space.**



Automatic scheduling **enables Academic Planners to manage their workload efficiently.**



A connected Plantilla builder schedules Teaching Faculty, Lecture Halls and Schedules, which simplifies planning and **helps teachers focus on enriching the learning experience.**



Camu facilitates a seamless and easy transition from the traditional system to the Choice Based Credit System.